

[Store Name]  
[Store Address]  
[City, State Zip]

Dear Manager,

**I am writing this letter to ask you to please voluntarily remove glue traps, and all similar sticky trap products, from your shelves.**

Glue traps are some of the most inhumane products on the market, causing appalling and prolonged suffering for animals. They should never be used in any context, indoors or out.

These traps may sound like a good choice to offer to your customers for rodent control, but we hope that, once people are educated as to what these devices actually do to the animals they capture, they will choose not to use them.

As advertised, glue traps are extremely sticky, and an animal that steps onto one is not able to escape. But the trap doesn't kill the animal. The glue is not toxic. It merely holds the animal until she dies, slowly, of starvation, dehydration and exposure.

Animals will struggle in vain to escape the trap, often ripping off skin and fur. In their attempts to escape, animals will inflict terrible injuries themselves including broken limbs. These injuries only add to the suffering glue-trapped animals endure.

This horrific death happens not only to the target rodents trapped by a glue trap, but to nontarget animals, such as chipmunks, lizards and birds. **A glue trap is a cruel, inhumane and unnecessary way for any living creature to die.**

Without exception, every person who has rushed to WildCare's Wildlife Hospital with an animal stuck in a glue trap that they set has expressed deep regret. Each person says that, had they known how intensely the trapped animal would suffer, no matter how despised that animal may be, they never would have used the product.

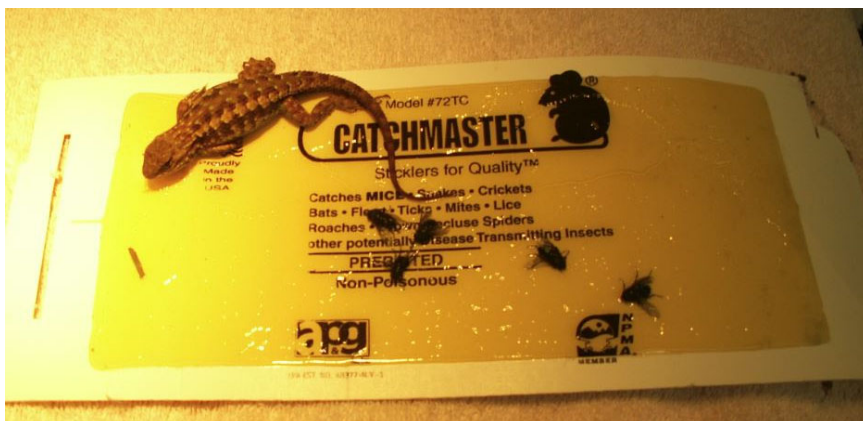
**Glue traps are indiscriminate killers and all animals caught in them suffer an inhumane and cruel death. Please do the right thing. Please stop selling cruel glue traps for good!**

Thank you for your consideration.

Sincerely,

[Your Name]

WildCare's Wildlife Hospital treats a dozen or more animals stuck to glue traps every year. Below are some images, taken of actual patients in care, of the suffering glue traps cause.



## How to Control Rodents Humanely

**The best method of rodent control is prevention.** Rodents tend to set up camp in our homes and businesses when food and space are made available to them.

**Remove** potential rodent homes like yard debris, trash, construction waste, etc. Remove ivy from on and near structures. Consider removing dense ground covering plants too.

**Eliminate food sources.** Keep your garbage completely sealed with lids closed and secured. Keep bulk food, seed, and dry pet food in metal cans with secure lids. Pick up fallen fruit. Take birdfeeders inside at night and feed pets indoors.

**Exclude rodents from your home.** Seal openings 1/4 inch or larger around the outside of your house with metal, concrete, or Stuff-It Copper Mesh Wool, which can be found online or at hardware stores.

**Include natural rodent predators in your solution.** A family of five owls can consume thousands of rodents in breeding season. Placing a nest box to encourage a family of owls to make your property home can be a great alternative to commercial pest control methods. **DO NOT** erect an owl box if poisons are being used in your neighborhood, however. Please visit [hungryowls.org](http://hungryowls.org) for more information.

**Use catch-and-release traps as a safe, sanitary, and humane solution.** Catch-and-release traps will allow you to remove rodents from inside your home, **but you must prevent their return by sealing entrance and exit holes and removing attractants (see above).**

If you exhaust all the above efforts and decide to employ lethal methods, please consider purchasing snap traps. Be careful about where you place lethal snap traps. These traps should only be used indoors out of reach of children or pets. If you find it necessary to use snap traps outdoors, to protect nontarget animals including federally protected birds, traps should be placed in locked tamper resistant boxes. **Never use glue traps/boards, they cause extreme suffering and are not humane.**