

# Wild Wetlands

California's wetlands are important places for birds to find food. Some birds will hunt for fish, frogs, or rodents. Other birds hunt for bugs or crustaceans in the muddy waters. All the birds will use their very different looking beaks to scoop, grab, or gobble up their food!

Can you match the bird on the left with its food on the right?  
Use the clues about the birds' beaks to tell what kind of food they each like to eat!



**Brown Pelican**

Long beak with a stretchy pouch for scooping up slippery animals that might be hiding deep under the water!



**Young Dragonfly**



**Northern Harrier**

Sharp, hooked beak for tearing meat!



**Anchovy**



**American Avocet**

Long curved beak for catching insects sitting on the top of the water!

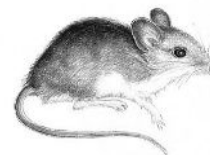


**Red-legged Frog**



**Great Egret**

Straight pointy beaks cuts through the water to grab its fast prey before it hops away



**Salt Marsh Harvest Mouse**



76 Albert Park Lane, San Rafael, CA 94901  
415-453-1000 [www.discoverwildcare.org](http://www.discoverwildcare.org)

# Wild Wetlands **Answers**

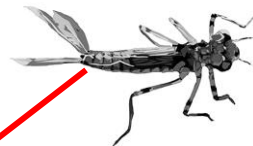
California's wetlands are important places for birds to find food. Some birds will hunt for fish, frogs, or rodents. Other birds hunt for bugs or crustaceans in the muddy waters. All the birds will use their very different looking beaks to scoop, grab, or gobble up their food!

Can you match the bird on the left with its food on the right?  
Use the clues about the birds' beaks to tell what kind of food they each like to eat!



**Brown Pelican**

Long beak with a stretchy pouch for scooping up slippery animals that might be hiding deep under the water!



**Young Dragonfly**

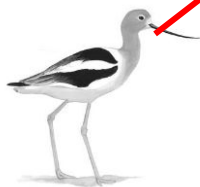


**Northern Harrier**

Sharp, hooked beak for tearing meat!

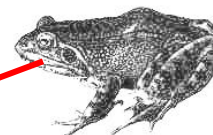


**Anchovy**



**American Avocet**

Long curved beak for catching insects sitting on the top of the water!

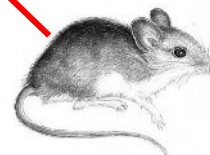


**Red-legged Frog**



**Great Egret**

Straight pointy beaks cuts through the water to grab its fast prey before it hops away



**Salt Marsh Harvest Mouse**



76 Albert Park Lane, San Rafael, CA 94901  
415-453-1000 [www.discoverwildcare.org](http://www.discoverwildcare.org)